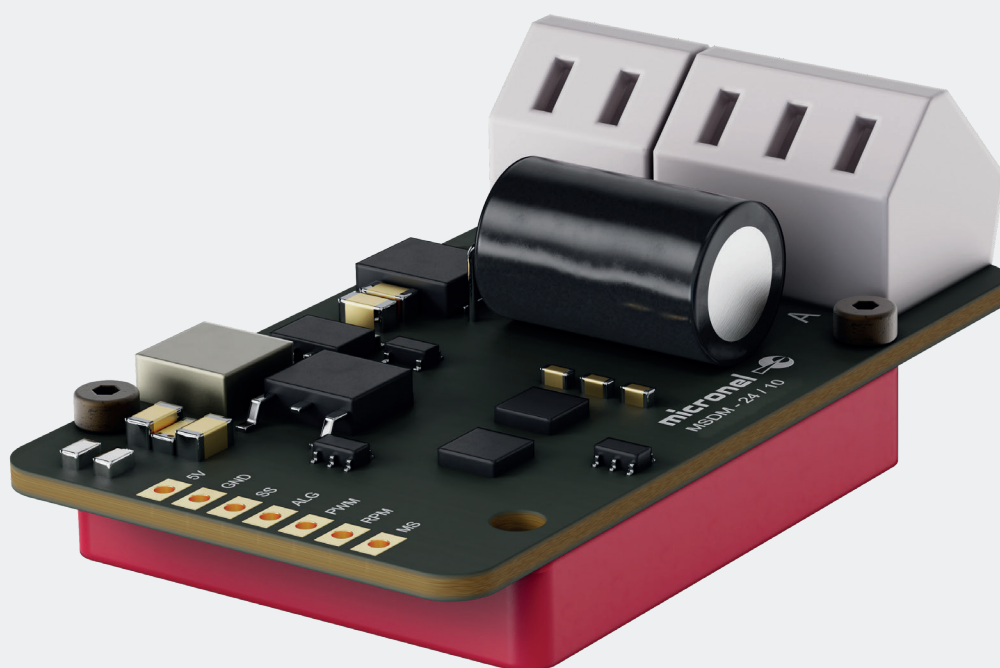


The Versatile Brushless Motor Driver MSDM-24/10

For Use With Micronel Blowers



Mini Smart Driver Module MSDM-24/10

Electronics designed specifically for Micronel blowers. With the MSDM-24/10, sensorless blowers can be effortlessly controlled, simplifying integration into devices or machines.

- 12 to 24 V_{DC} supply voltage with 10 A_{RMS}
- Sensorless operation
- Analog or PWM speed setting
- Speed control loop
- Digital tachometer output
- AWG 24-14 (0.2 to 2 mm²) clamp terminals
- Various protection features (under and over voltage detection, overload, temperature, locked motor)
- Universal flange mounting

Driver Electronic for Sensorless Operation.

The Mini Smart Driver Module MSDM-24/10 is a 1-quadrant motor driver designed specifically for Micronel driverless blowers with BLDC motors. This compact module expands system capabilities, enabling seamless integration and precise control of sensorless operating Micronel blowers.





Highlight Features of MSDM-24/10

- Sensorless operation
- Speed control loop
- High dynamic operation
- Supply voltage 12 to 24 V_{DC} with 10 A_{RMS}
- Motor speed up to 100000 RPM
- Speed setting Analog or PWM
- Digital tacho output

Suitable for Various Micronel Radial Blowers:

U51DX-012KK-5	U65ML-012KS-5	U71HL-024KM-5	U85MX-024KE-5
U51DX-024KK-5	U65ML-024KT-5	U71HN-024KX-6	U85MX-024KX-5
U51D2-024KX-6	U65MN-024KS-5	U71HX-024KX-6	U85MN-024KX-5
U65HN-024KS-6	U65H4-024KX-6	U85HL-024KH-5	

Pairing seamlessly with our precision-made miniature blowers, the Mini Smart Driver Module MSDM-24/10 is compact, small, and highly sophisticated. With its ability to achieve exceptionally high dynamics, this module perfectly complements Micronel's latest technology and compact design ethos.