

## Miniature Fans and Blowers Powering Medical Ventilation



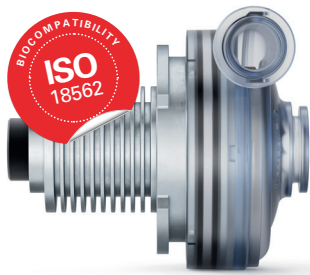
### Applications

- ICU
- Neonatal
- Transport
- Subacute
- Emergency
- Cough therapy
- Home care
- Sleep apnea

### Product Features

- Brushless motor drives
- Uniform PQ characteristics and mounting system
- Smallest form-factor
- Highly efficient
- Superior dynamic responsiveness (up to 400 RPM/ms)
- Pressures up to 12300 mbar
- 100% oxygen resistant

Micronel's U65 FORM FIT LINE has become the hallmark for state-of-the-art medical ventilator designs, ranging from sleep apnea up to intensive care units (ICU). These space-saving, high-performance turbines share uniform PQ output characteristics and mounting geometries. The turbines offer the customer the advantage of modular ventilation design concepts using consistent component interfacing. Micronel's precision engineered products comprise well-balanced, super-low mass rotor systems that enable virtually vibration-free operation and best in class dynamic responsiveness. The brushless motorized impeller and airway systems have been aerodynamically perfected and thus provide superior efficiency and ultra-quiet operation, coupled with highest reliability and life expectancy.



## U65HN

Top of the range,  
highest speed,  
most dynamic behavior!

|                                 |                             |
|---------------------------------|-----------------------------|
| <b>Static pressure</b>          | 9 500 Pa                    |
| <b>Freeflow</b>                 | 435 l/min                   |
| <b>Dynamic response</b>         | 400 RPM/ms                  |
| <b>Hall/NTC out</b>             | Yes/Yes                     |
| <b>O<sub>2</sub> resistance</b> | Yes                         |
| <b>Typical applications</b>     | ICU, neonatal,<br>transport |



## U65MN

Versatile mid range  
blower, higher speed motor,  
with Hall sensors!

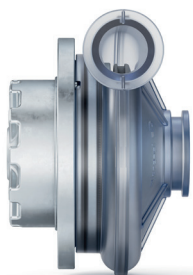
|                                 |  |
|---------------------------------|--|
| <b>Static pressure</b>          | 5 400 Pa                                     |
| <b>Freeflow</b>                 | 340 l/min                                    |
| <b>Dynamic response</b>         | 250 RPM/ms                                   |
| <b>Hall/NTC out</b>             | Yes/Yes                                      |
| <b>O<sub>2</sub> resistance</b> | Optional                                     |
| <b>Typical applications</b>     | Home care, transport,<br>subacute, emergency |



## U65ML

Entry level, most economic  
blower for high  
volume requirements!

|                                 |                        |
|---------------------------------|------------------------|
| <b>Static pressure</b>          | 4 300 Pa               |
| <b>Freeflow</b>                 | 295 l/min              |
| <b>Dynamic response</b>         | 150 RPM/ms             |
| <b>Hall/NTC out</b>             | No/No                  |
| <b>O<sub>2</sub> resistance</b> | No                     |
| <b>Typical applications</b>     | Sleep apnea, home care |



## U85MX

Most powerful blower,  
where highest pressures  
are needed!

|                                 |               |
|---------------------------------|---------------|
| <b>Static Pressure</b>          | 12 300 Pa     |
| <b>Freeflow</b>                 | 860 l/min     |
| <b>Dynamic response</b>         | 100 RPM/ms    |
| <b>Hall/NTC out</b>             | Yes/No        |
| <b>O<sub>2</sub> resistance</b> | No            |
| <b>Typical applications</b>     | Cough therapy |

(Optionally available with integrated motor controller)